

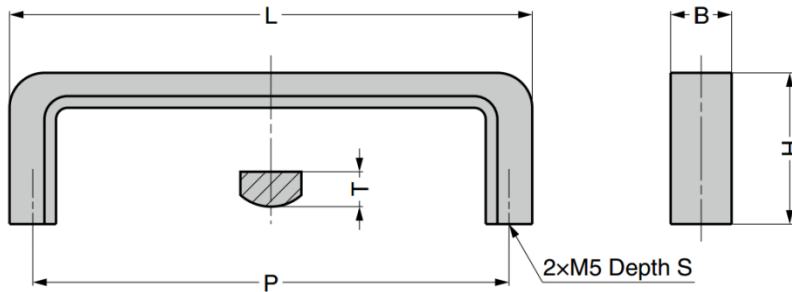
GFB Stainless Steel Handle

Material

- Stainless steel 304, polished

Parts Included

- Pan head screw M5×25



Part No.	L	H	B	T	P	S
GFB-90	90	26	10.5	6	82	10
GFB-110	110	28	12.5	7	102	12
GFB-130	130	32	14.5	8	120	14

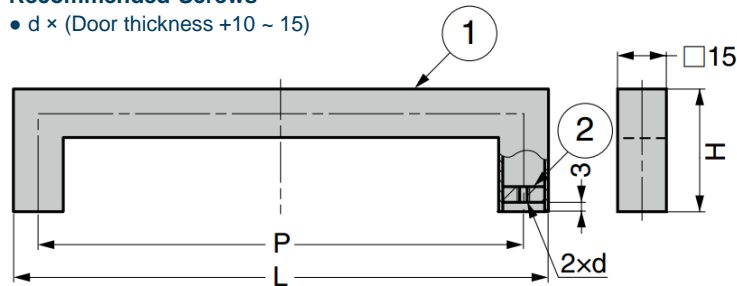
GKPH Stainless Steel Handle

Features

- Light handle with hollow body

Recommended Screws

- d × (Door thickness +10 ~ 15)



No.	Part Name	Material	Finish
①	Body	Stainless Steel	Satin
②	Nut	(SUS304)	Plain

Part No.	L	H	P	d
GKPH-160	176	40	160	M4
GKPH-192	208		192	
GKPH-224	240	50	224	M5
GKPH-256	272		256	
GKPH-288	304		288	